

# EDGE Nano1

Manual  
Manual

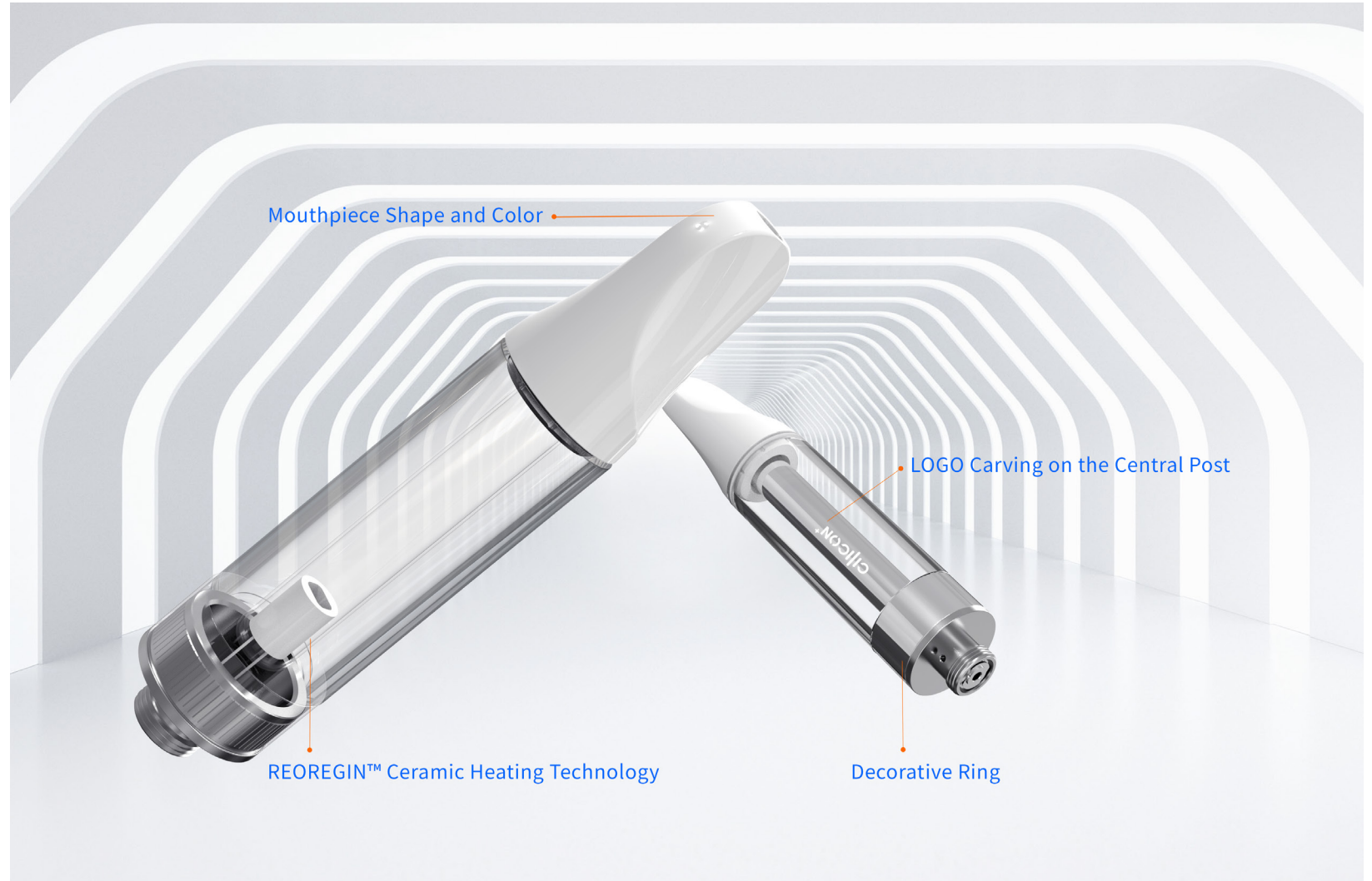
87296AL82892/06/14



## — Product Overview

# Custom Your Advanced and Cost-Effective 510 Cartridge

EDGE Nano1 is a compact, detail-rich 510 thread cartridge built for the breakthrough. It features the revolutionary Reoregin™ ceramic heating technology, the ergonomic flat-like mouthpiece, and multiple customized options like logo carving, the color of the decorative ring, and mouthpiece shape. Whether you're chasing the original and impressive flavor or an individual consuming experience, EDGE Nano1 is up for the moment.

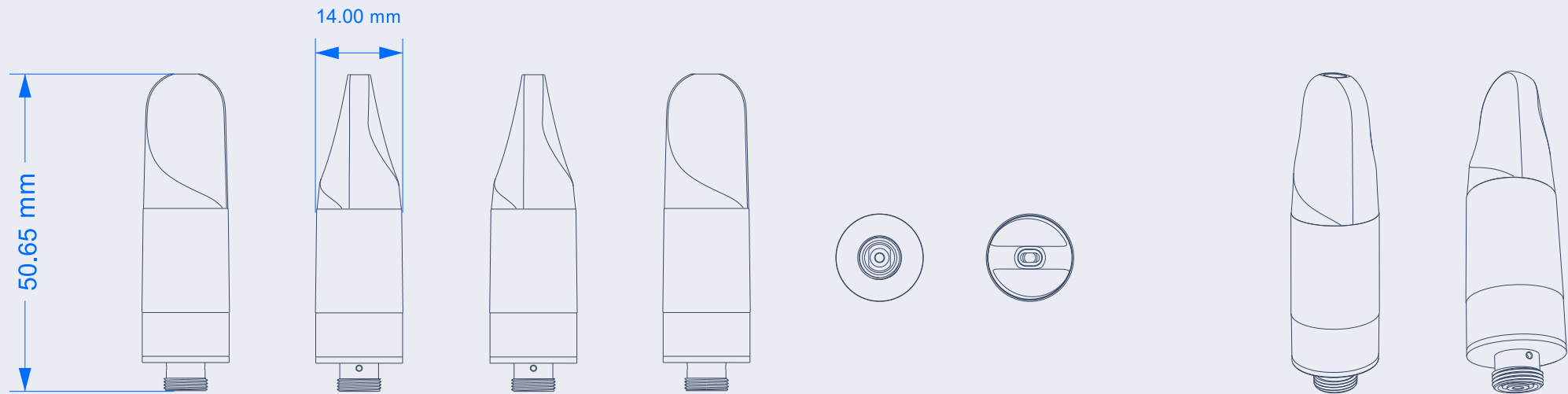




## Specifications

Dimension :	Φ14.00mm*50.65mm (1.0mL) Φ14.10mm*66.65mm (2.0mL)
Tank Volume :	1.0mL/2.0mL
Resistance :	1.5Ω
Intake Hole :	2-(1.5mmx2.0mm)

Tank Material :	PCTG (Food Grade)
Mouthpiece Material :	PCTG (Food Grade)
Central Post :	Stainless Steel (SUS304)
Ceramic Coil :	Reoregin™ Ceramic Heating Coil
Tip Type :	Press-In



## — Features

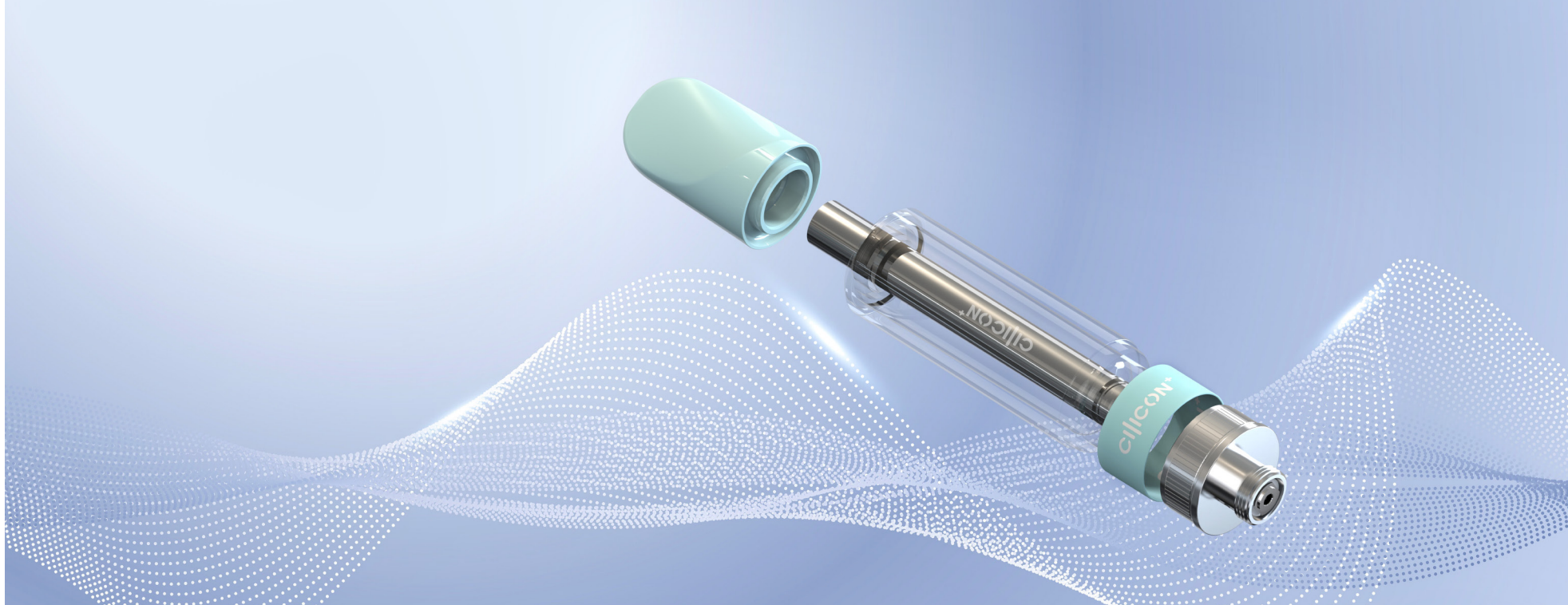
### Revolutionary Power in a Compact Design

Compact yet powerful, EDGE Nano1 blends the pioneered Reoregin™ ceramic heating system with a new product design reaching up to 14mm in diameter and a flat-like mouthpiece design, making the taste and flavor delivered from each vapor so impressive and remarkable. From using to vaping, this is a superlative 510 cartridge that goes above and beyond your expectations.





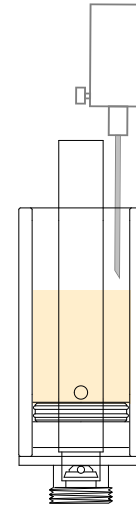
## — Features



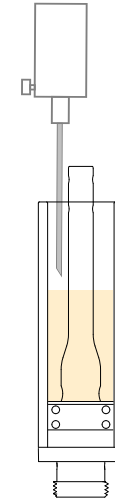
### **3+ Custom Options to Unleash Your Creativity**

In a world of ever more standard and conventional 510 devices, EDGE Nano1 shows there is another way. Changing the color of your decorative ring, carving your logo on the central tube, and choosing your preferred mouthpiece design, it packs multiple customized design options that provide more space to show your brand identity.

## — Features



EDGE Nano1



Traditional 510 Cartridge



## Maximum Impact, Minimum Effort

Get a cost-effective experience in minutes with Spacxfill™ technology, making oil-filling easier through a clever and simple design. When it is used with the Vshaped™ design, your user experience will be largely optimized, saving each drop of cannabis extract.



— Technology

# Reoregin™ Ceramic Heating Technology

Back to the Ultimate Freshness

Reoregin™ ceramic heating technology is designed for excavating all levels of terpenes' flavor and aroma by adopting a lower vaporizing temperature setting and an even heat distribution system. Once combining Cilicon's exclusive mesh heating coil with matched ceramic porosity, every scent molecule in the cannabis oil becomes available to all, letting people discover the most original taste of cannabis oil with full ingredients while driving a faster-vaporizing process.

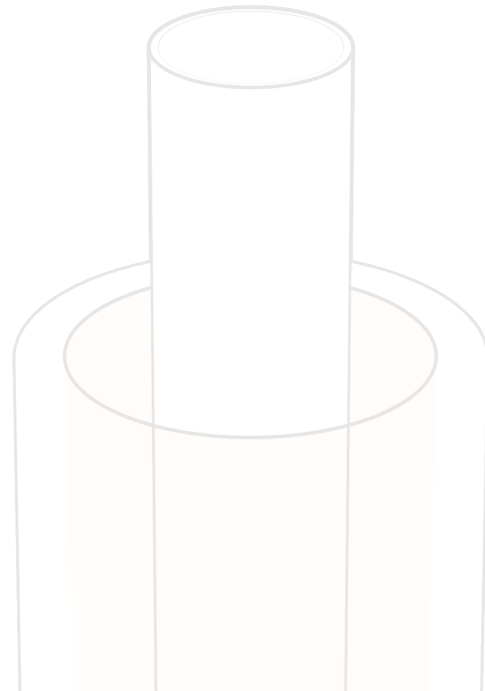


## Technology

# Spacfill™ Technology

To Make Oil Filling Easier

Spacfill™ is a technology that improves the efficiency of the oil cartridge filling process by sealing the silicone plug with the fixated mouthpiece and creating an entirely new oil filling method. This technology expands the width of the oil injection space, freeing up the entire oil filling area around the oil tank except for the central tube to minimize the oil drops and leakage resulting in oil wastage.



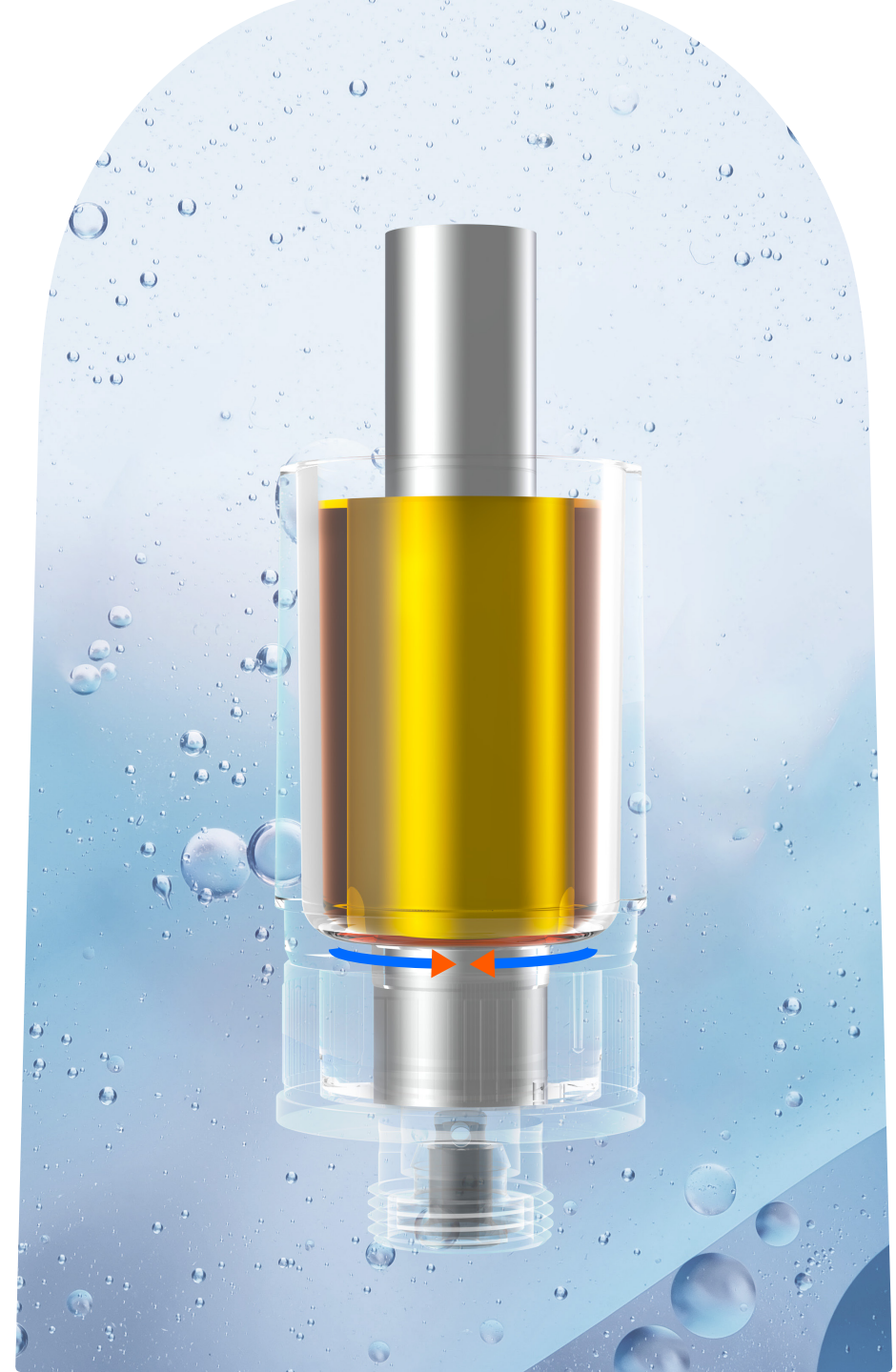


## — Technology

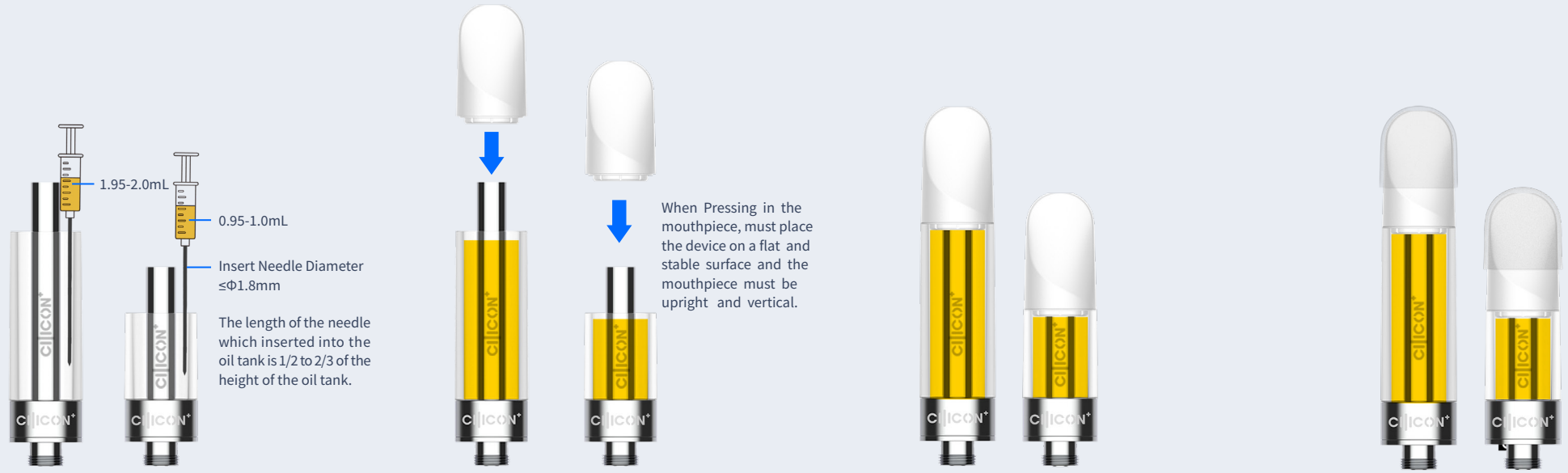
# Vshaped™ Design

## No Oil Wastage

Oil with high viscosity is slow-moving and directionless when it is placed on a flat surface. We often receive feedback about residual cannabis oil in the oil chamber which cannot flow into the ceramic heating core. According to the basic principle of gravity, Cilicon restructured the bottom surface of the oil chamber into a V-shaped form toward the ceramic heating core instead of keeping it flat, ensuring all the remaining oil is used without any cannabis oil waste.



## Filling Instruction



1

### Top Filling

Do not overfill or allow oil to enter the center post.

2

### Press-in Mouthpiece

If the concentrate is as liquid as edible oil, please press in the mouthpiece within 90s. If the concentrate is thicker than edible oil, please press in the mouthpiece within 180s.

3

### Finish Filling and Capping

After Press in the mouthpiece into oil tank, please may the product sit still for 4 hours before using.

4

### Final Product

1. After filling and capping, suggest to put the product upside down (mouthpiece face down) for storage before sales.
2. After take off the silicon rubber case, suggest to finish the oil within two weeks.



# CONTACT US

Your Brand Success and Customer Satisfaction is Our Priority

📷 :@cilicon.official

✉ :info@ciliconplus.com

🏠 :@cilicon

🌐 :www.ciliconplus.com

🐦 :@CiliconOfficial

📘 :@ciliconofficial

